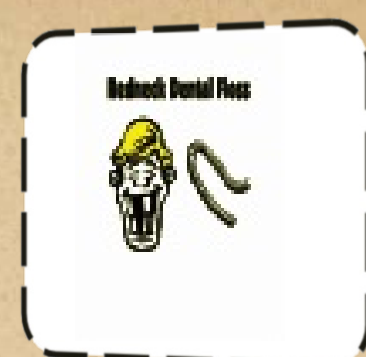




This is used to clean the dental operatory



What is dentalgia?



Where are the Tomes Fibers found in the tooth???????



What procedure kills all the germs and microorganisms found on dental instruments?



What part of the skull is the glenoid fossa close to?????



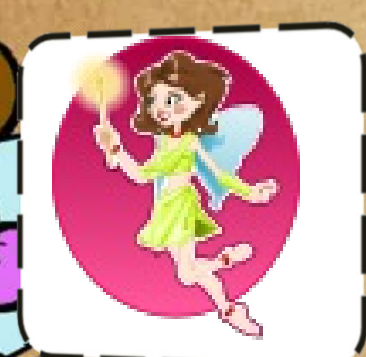
In what country is the tooth fairy actually a mouse????



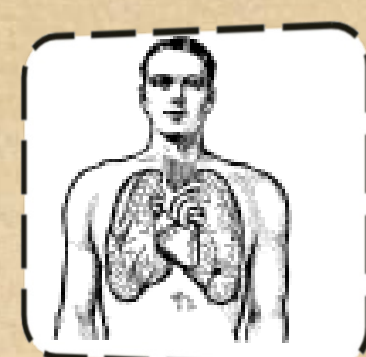
What do parents do in Costa Rica with baby teeth that fall out?



A shark can replace a lost tooth every ???? days



Who played the tooth fairy in the movie... The Tooth Fairy???????



90% of all the bodies systemic disease start where????